

CRITICAL WORKFORCE SHELTERING

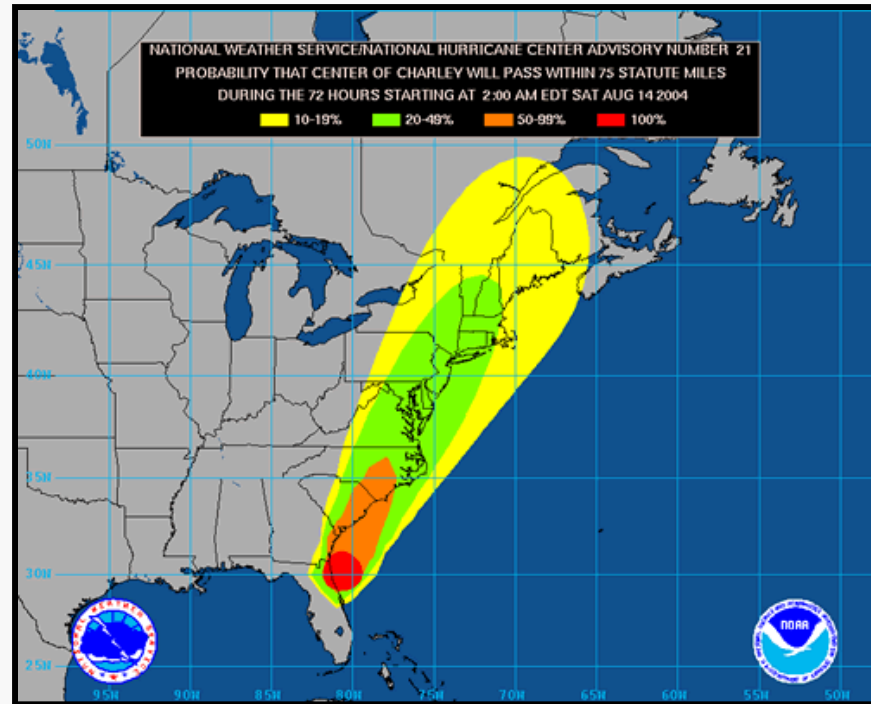
David Grotyohann



Disaster Planning and Response

Discussion

- Critical Workforce and Sheltering



Chatham Emergency Management Agency (CEMA)

The Mission of the Chatham Emergency Management Agency is to protect lives and property from the threat of all types of major emergencies and disasters, both natural and manmade. This shall be accomplished by providing community-wide leadership, guidance, support and coordination in the areas of mitigation, preparedness, response and recovery.



Chatham Emergency Management Agency (CEMA)

CEMA has developed Countywide plans which have been written and approved by the responsible partners in our community. These plans provide critical guidance for the necessary protection of lives and property during emergencies. CEMA has the ability to coordinate the mobilization of available local assets and resources. When additional resources that are not locally available are required, CEMA can contact the State for their support. During a major event, the CEMA EOC will be the Countywide point-of-contact.



ESF-6 Mass Care

Primary focus is on sheltering activities, mass feeding, and the coordination of volunteer agency activities involved in mass care as directed by the American Red Cross.

Coordinate the activities of all public shelters that fall under the American Red Cross Shelter guidelines. This includes shelters formed before, during, and after the event. Those shelters not designated in the planning process as Red Cross shelters (spontaneous shelters) will receive Red Cross food resources and staffing only in post-impact period when notification and access to these shelters is possible

Assist in the coordination of mass feeding sites established by the American Red Cross and volunteer agencies. When possible, mass-feeding activities will include feeding of disaster victims and critical workforce personnel.

Generate, procure, and regularly update a list of all public and private agencies that have a mission to provide mass feeding in times of disaster. The list will provide specific information, to include:

Coordinate sanitation provisions and inspections, and garbage removal from mass feeding sites.



ESF-6 Mass Care

Chatham County ESF-6 Partners

American Red Cross

Chatham Department of Family and Children's Services

Chatham Emergency Management Agency

Chatham County Public Health Department

Area Nursing Homes

Chatham Area Transit

Savannah-Chatham County Public School System

Savannah-Chatham Metropolitan Police Department

Chatham Emergency Medical Service (EMS) Providers

Amateur Radio Emergency Services

Salvation Army



Overview

The Chatham County has over 2,000 Critical Workforce (CWF) scheduled to shelter in the area and respond as needed. This presentation will show how CWF will be mobilized in response to a Countywide disaster.

It is understood that this scenario is a mandatory County evacuation and the Critical Workforce will be housed in local shelters and EOC.

Upon arrival to their designated facility, Critical Workforce employees will immediately establish office operations in support of the disaster/event.

All First Responders and Emergency Management partners will seek safe shelter outside of the immediate area.



Critical Workforce Checklist

- Change of clothing for at least 5 days
- Bed roll to include sleeping mat, pillow, and blanket
- Folding chair or stool
- Personal electronic devices with earphones such as radios, MP3 player, etc.
- Books or magazines
- Flashlight with spare batteries
- Shower shoes or flip flops
- Drivers license (Bring your Municipal/County/Business/Industry/ ID card or tag)
- Bring 3-5 days rations. Snack foods
- Eyeglasses (prescription and sun)

Critical Workforce Checklist

Personal Hygiene items:

- Toothbrush
- Toothpaste
- Razors
- Hand towel
- Bar soap
- Deodorant
- Shampoo
- Shaving lather/cream
- Hand or body lotion
- Bath towel
- Disposable wipes



Medicines:

- Prescription medications at least 10 days supply
- Over the counter medications you may use (eye drops, pain medications, antacids, etc), Sun Screen, Insect Repellent, etc.

CEMA Critical Workforce Shelters

Savannah Morning News (Supporting the EOC Operations)

Savannah-Hilton Head International Airport

Hunter Army Air Field

Ebenezer Middle School

Georgia Southern University

Biology Building

Foy Fine Arts Building

Math and Physics Building

Equipment Staging Only – Effingham Industrial Development Authority



CEMA Critical Workforce Shelters

Savannah Morning News

Location: 1375 Chatham Parkway, 17' Above Mean Sea Level

Shelter Manager: Production Manager

Sheltering Area: Interior hallways, foyers and offices to a Category 3.

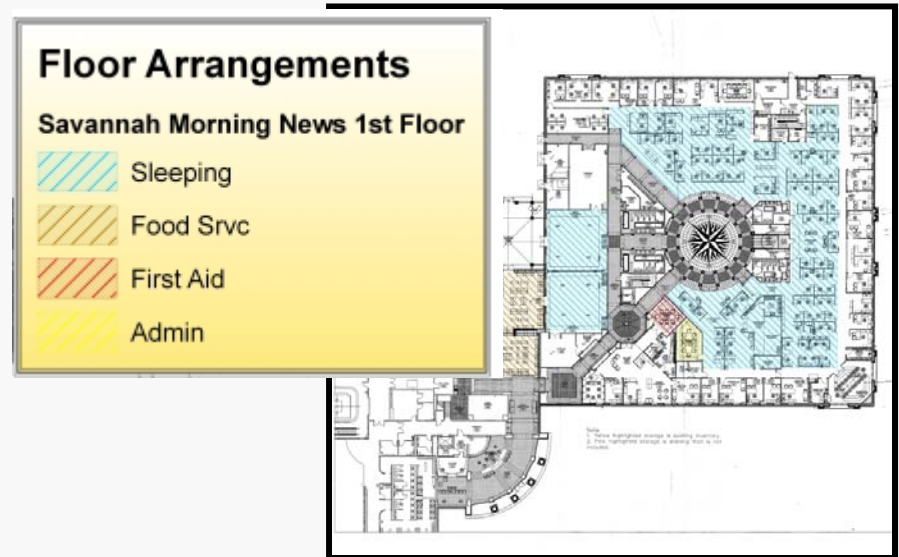
Capacities:

- 150 persons
- 0 Large Vehicles
- 150 Light Vehicles

Not bedding or cots provided.

Food and Water

- Salvation Army Canteen
- Bring 3-5 days rations for each employee as a contingency plan.



CEMA Critical Workforce Shelters

Savannah Hilton Head International Airport

Location: 400 Airways Avenue, 47' Above Mean Sea Level

Shelter Manager: Gregg Kelly, Airport Operations Director

Sheltering Area: Ground Level Rated to a Category 3.

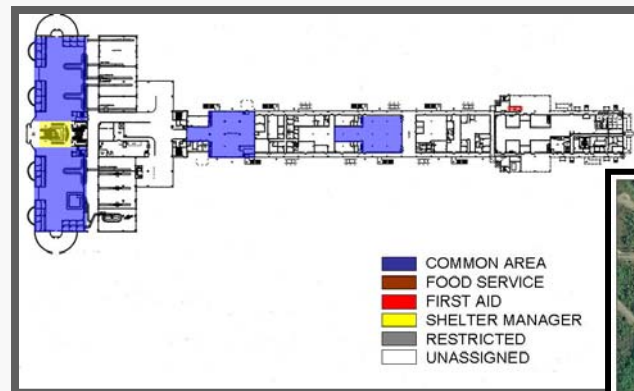
Capacities:

- 838 Persons
- 125 Large Vehicles
- 382 Light Vehicles

No bedding or cots provided.

Food and Water

- Airport Commission will feed one hot meal per day to CWF tenants.
- Bring 3-5 days rations for each employee as a contingency plan.



CEMA Critical Workforce Shelters

Hunter Army Air Field

Location: 685 Horace Emmit Wilson Blvd., 42' Above Mean Sea Level

Shelter Manager: James Dean

Sheltering Area: Interior hallways, foyers and offices to a Category 2.

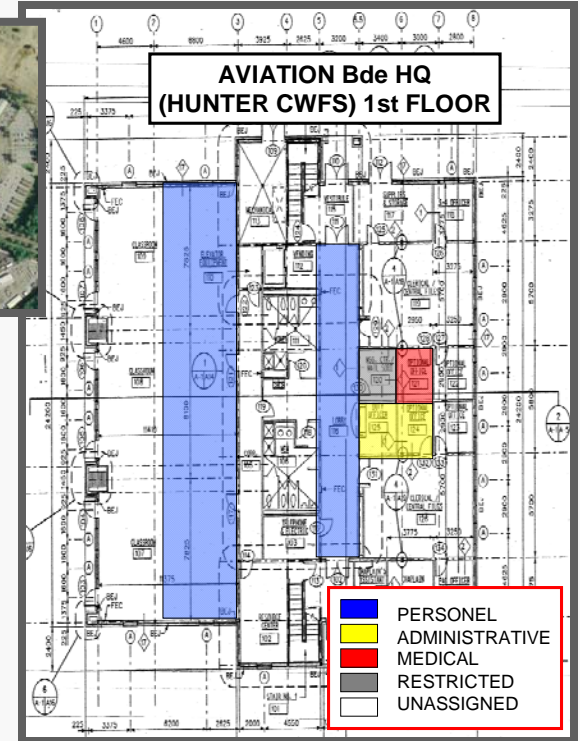
Capacities:

- 210 Persons
- 39 Large Vehicles
- 16 Light Vehicles

No bedding or cots provided.

Food and Water

- Bring 3-5 days rations for each employee.



CEMA Critical Workforce Shelters

Ebenezer Middle School

Location: 405 Ash Street, Springfield, 63' Above Mean Sea Level

Shelter Manager: Ralph Maggioni

Sheltering Area: Ground Level Rated to a Category 3.

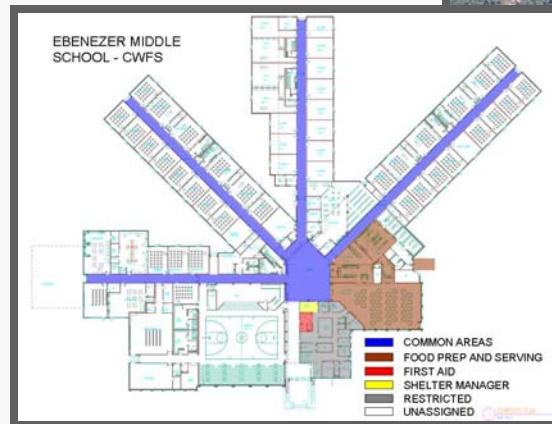
Capacities:

- 680 Persons
- 320 Large Vehicles
- 220 Light Vehicles

No bedding or cots provided.

Food and Water

- Salvation Army Canteen
- Bring 3-5 days rations for each employee as a contingency plan.



CEMA Critical Workforce Shelters

Effingham Industrial Development Authority

Equipment Staging Facility

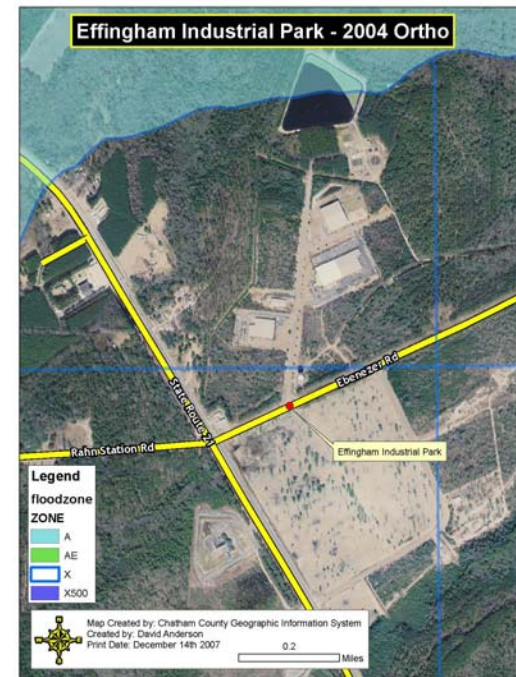
Location: Industrial Blvd. & Governor Treutlen Drive, Springfield, 65' Above Mean Sea Level

Staging Manager: John Henry, Director of EEDA

Staging Area: Not in storm surge zone.

Capacities:

- 60 Large Vehicles



CEMA Critical Workforce Shelters

GSU – Biology Building

Location: Georgia Avenue, GSU Statesboro, 237' Above Mean Sea Level

Shelter Manager: TBD by CEMA – Manager Kit provided

Sheltering Area: 3 Floors, stay clear of outer walls and windows

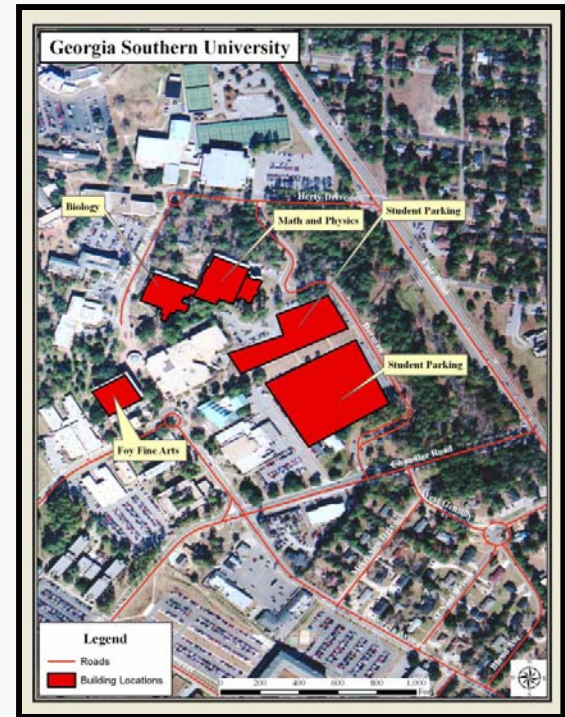
Capacities:

- 520 Persons
- 36 Large Vehicles
- 207 Light Vehicles

No bedding or cots provided.

Food and Water

- Bring 3-5 days rations for each employee.



CEMA Critical Workforce Shelters

GSU – Foy Fine Arts Building

Location: Georgia Avenue, GSU Statesboro, 237' Above Mean Sea Level

Shelter Manager: TBD by CEMA – Manager Kit provided

Sheltering Area: 3 Floors, stay clear of outer walls and windows

Capacities:

- 780 Persons
- 295 Large Vehicles
- 195 Light Vehicles

No bedding or cots provided.

Food and Water

- Bring 3-5 days rations for each employee.



CEMA Critical Workforce Shelters

GSU - Math and Physics Building

Location: Georgia Avenue & Herty Drive, GSU Statesboro, 237' Above Mean Sea Level

Shelter Manager: Ralph Maggioni, Director Foreign Trade Zone

Sheltering Area: 3 Floors, stay clear of outer walls and windows

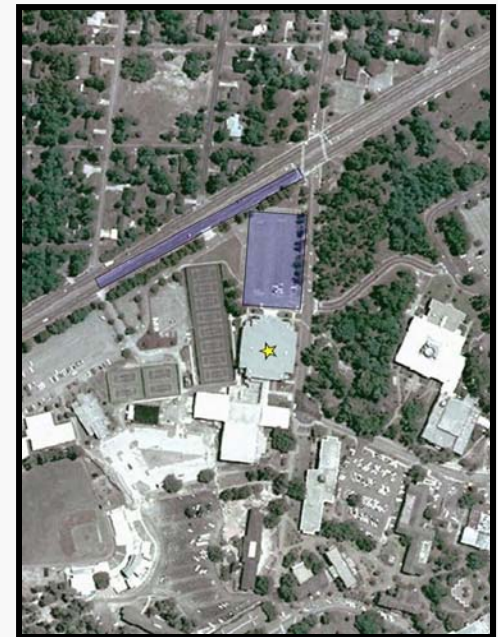
Capacities:

- 850 Persons
- 35 Large Vehicles
- 205 Light Vehicles

No bedding or cots provided.

Food and Water

- Bring 3-5 days rations for each employee.



Municipal Critical Workforce Shelters

City of Savannah

- Savannah Civic Center
- I&D Water Plant
- Memorial University Medical Center
- Candler Hospital
- St. Joseph's Hospital
- Fire Stations 3, 5, 9 & 13



City of Garden City

- GC City Hall



Municipal Critical Workforce Shelters

Savannah Civic Center

Theater and Arena Facility located in downtown Savannah.

Shelter Manager: City of Savannah (Owner)

235 CWF Employees scheduled to be Sheltered here in 2010. Theater side rated to a Category 3.



Municipal Critical Workforce Shelters

I & D Water Plant

Water Supply Facility located near Port Wentworth.

Shelter Manager: City of Savannah (Owner)

164 CWF Employees scheduled to be Sheltered here in 2010.



Municipal Critical Workforce Shelters

Memorial University Medical Center

MOU between the hospital and City of Savannah.

Shelter Manager: City of Savannah

150 CWF scheduled to be sheltered on the 3rd and 4th Floors of the Heart and Lung Center in 2010. The floors are vacant and new construction. Rated to a Category 4.



Municipal Critical Workforce Shelters

Candler Professional Building

MOU between the hospital and City of Savannah.

Shelter Manager: City of Savannah.

88 CWF scheduled to be sheltered in the hallways on the 2nd, 3rd, 4th, & 5th Floors in 2010. Rated to a Category 3.



Municipal Critical Workforce Shelters

St. Joseph's Hospital

MOU between the hospital and City of Savannah.

Shelter Manager: City of Savannah

45 CWF scheduled to be sheltered in two training rooms on the 2nd Floors in 2010. Rated to a Category 3.



Municipal Critical Workforce Shelters

City of Garden City, City Hall

Municipal Administration Building located on Dean Forest Road.

Shelter Manager: City of Garden City (Owner)

61 CWF scheduled to be sheltered in 2010. Rated to a Category 3.



CEMA Critical Workforce Shelters



2011 CHATHAM COUNTY CRITICAL WORKFORCE SHELTERING ENTITY REQUIREMENTS AND SHELTER ASSIGNMENTS

AGENCY NAME:			DATE:	
POC NAME:		PHONE:		EMAIL:
SHELTER NAME / STAGING	PERSONNEL	LARGE VEHICLES	LIGHT VEHICLES	
EOC ANNEX / SMN				
SHHI AIRPORT				
HUNTER AAF				
EBENEZER MIDDLE				
EIDA STAGING AREA	N/A			
OTHERS (FROM REVERSE)				
TO BE COMPLETED BY CEMA FOR MAJOR STORM THREATS				
GSU FFA				
GSU M&S				
GSU BIO				
OTHER				



Municipal Critical Workforce Shelters



2011 CHATHAM COUNTY CRITICAL WORKFORCE SHELTERING ENTITY REQUIREMENTS AND SHELTER ASSIGNMENTS

AGENCY NAME:		DATE:	
OTHER SHELTER NAMES / STAGING AREAS (LIST)	PERSONNEL	LARGE VEHICLES	LIGHT VEHICLES
Savannah Civic Center			
I&D Water Plant			
Memorial UMC			
Candler Hospital			
St. Joseph's Hospital			
Savannah Fire Stations 3, 5, 9, & 13			
Garden City – City Hall			
TOTALS (COPY TO FRONT)			



CEMA Critical Workforce Shelters

Point of Contact

David Grotyohann

- 912-201-4500(o)
- 912-658-6602(c)
- 912-201-4504 (fax)
- dsgrotyohann@chathamcounty.org

