

# ***Debris Management***

# ***Planning Considerations***



# ***DEBRIS MANAGEMENT PLANNING CONSIDERATIONS 101***

**Debris removal operations can be time consuming and costly. Events generating large amounts of debris are not limited to hurricanes. Other debris generating events include:**

***Tornadoes***  
***Floods***  
***Wildfires***  
***Earthquakes***  
***Ice storms***  
***Tsunamis***  
***Acts of Terrorism***

***FLOODING  
2011 Mississippi River  
Vicksburg, MS***



***TORNADOS  
2011 Meriwether County, GA***

# The Stafford Act

The Robert T. Stafford Disaster Relief and Emergency Assistance Act, Public Law 93-288, as amended, 42 U.S.C. § 5121, et seq. (referred to as the Stafford Act)....

....authorizes the Federal government  
(*through the FEMA PUBLIC ASSISTANCE PROGRAM*)  
to provide funding to State and local governments,  
Federally recognized tribes, and eligible private non-  
profit organizations (*ELIGIBLE APPLICANTS*) in order  
to assist them in their response and recovery activities  
following a *PRESIDENTIALLY DECLARED* disaster.

# FEMA's Public Assistance Grant Program

- ❖ FEMA's Public Assistance (PA) Program provides *PARTIAL* reimbursement (75/25) for an applicant's response and recovery efforts following a declared disaster.

Specifically, the PA Program *MAY* provide funding for:

- ❖ Implementation of Emergency Protective Measures
  - ❖ *Permanent Restoration of Eligible Facilities and Infrastructure*
  - ❖ **DEBRIS REMOVAL**

# It's NOT Automatic

- ❖ To receive supplemental disaster assistance under the PA Program, *applicants* must meet **All FEMA *ELIGIBILITY* criteria.**
- ❖ So, how does an applicant meet all of FEMA's "eligibility criteria"?

# ***PLANNING***

- ❖ **Communities with *DEBRIS MANAGEMENT PLANS* not only are better prepared to restore public services and ensure the public health and safety in the aftermath of a disaster, they are also *better positioned to receive the full level of assistance available to them from FEMA.***
- ❖ **FEMA *encourages* State and local governments, tribal authorities, and private non-profit organizations to take a proactive approach to coordinating and managing debris removal operations as part of their overall emergency management plan.**

# Key Components of a Debris Management Plan

- ❖ An Established Debris Management Structure
- ❖ A Good Assessment of the situation and assumptions
- ❖ A Well-Defined Debris Collection Plan
- ❖ In-Place Procedures for Contracted Services
- ❖ A Process for Demolition and Debris Removal from ***PRIVATE PROPERTY***
- ❖ A Process for Disseminating Information
- ❖ A Comprehensive Safety Program

# Debris Management Structure

- ❖ The size and composition of a staff organized to manage debris clearance, removal, and disposal issues depends on the magnitude of the disaster and the size of the jurisdiction.
- ❖ A pre-disaster debris planning staff may be quite small; however, following a major disaster, additional staff members may be required.

# Debris Management Organization

- ❖ **The Organization of the Debris Management Function is Critical**
- ❖ **There must be a logical organizational structure established to allow maximum controlled flexibility**
- ❖ **The *Incident Command System (ICS)* is well-documented and tested as a model tool for commanding, controlling, and coordinating a disaster response.**

# ICS Organizational Structure

Per ISC-100 (Introduction to the Incident Command System)



# Debris Management Organizational Structure

To facilitate debris removal, the Debris Management organization should not only be ICS compliant, but also aligned with the various *functions associated with debris removal operations.*



# Debris Removal Operational Functions

Debris Management Guide FEMA P-325 (Public Assistance)



# **County-Wide Debris Planning Initiative**

**In July 2010, representatives from Chatham County's municipal jurisdictions, Chatham Emergency Management Agency (CEMA), and various State agencies met to discuss debris management plans. This meeting resulted in the creation of a Debris Management Workgroup (DMW).**

**The primary mandate of the DMW was to provide recommendations for an entity within the County's Emergency Operations Center (EOC) responsible for maintaining situational awareness, status, and coordinating the efforts of post disaster debris management operations throughout Chatham County.**

# Workgroup Methodology

**During a series of meetings, discussions addressed:**

- ❖ **Where did we stand County-wide (Current Plans)?**
- ❖ **What did we know and.....  
what does a good Debris Management Plan consist of?**
- ❖ **Where do we need to be (Planning Considerations)?**

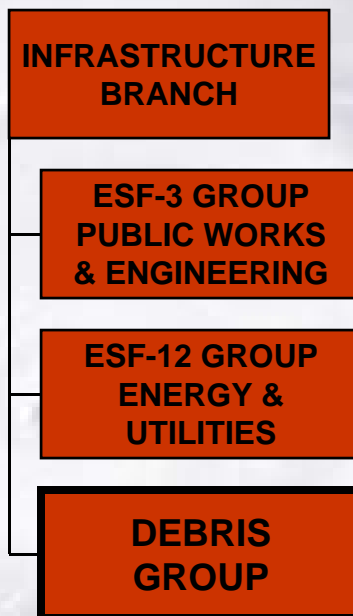
**As a result of these meetings, the Workgroup made  
5 recommendations for County-wide debris planning:**

## **Recommendation 1.**

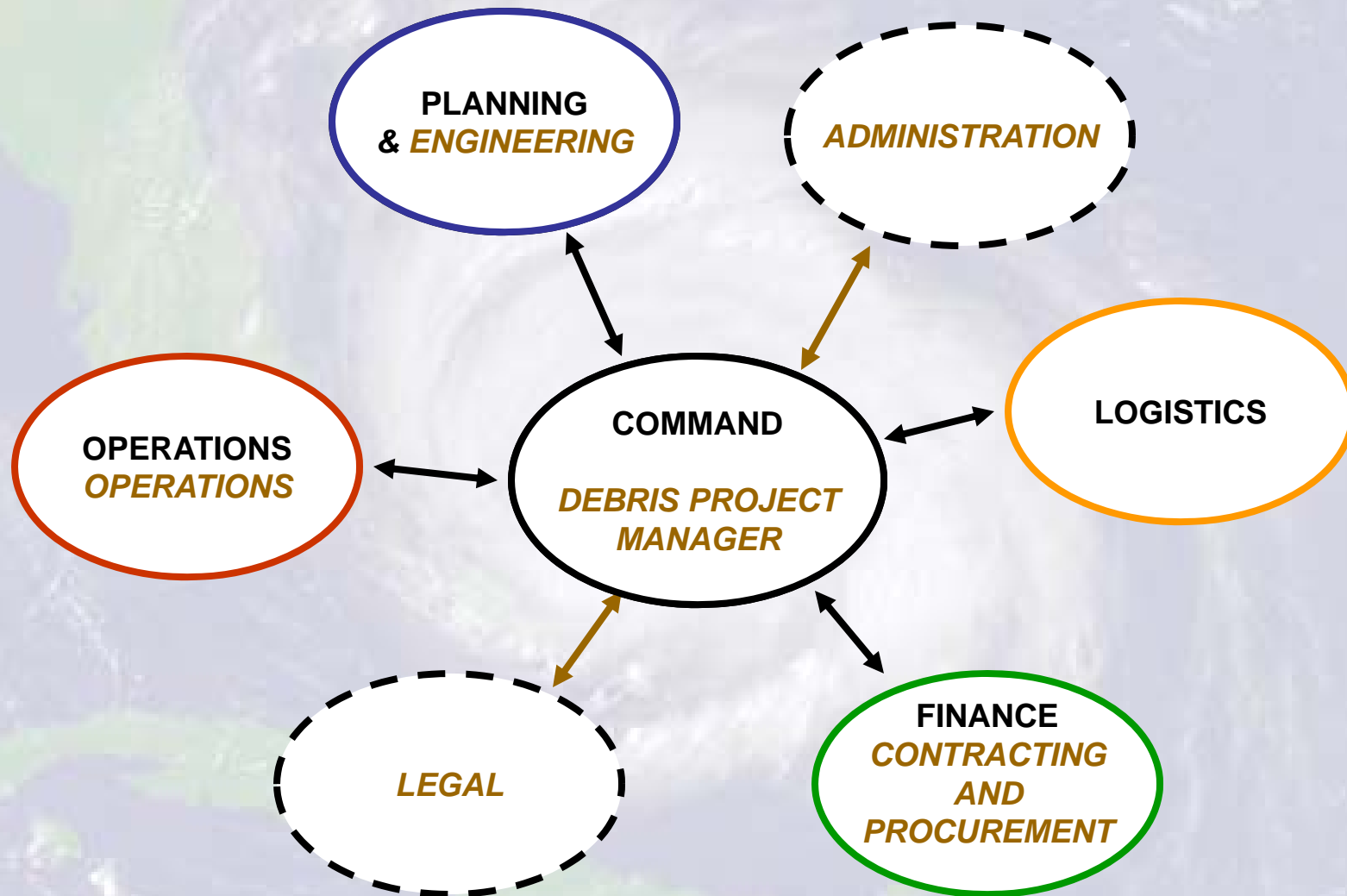
**Organize and staff a Debris Group under the Infrastructure Branch of the EOC Operations Section to coordinate post event County-wide debris management issues.**

# EOC Organizational Structure

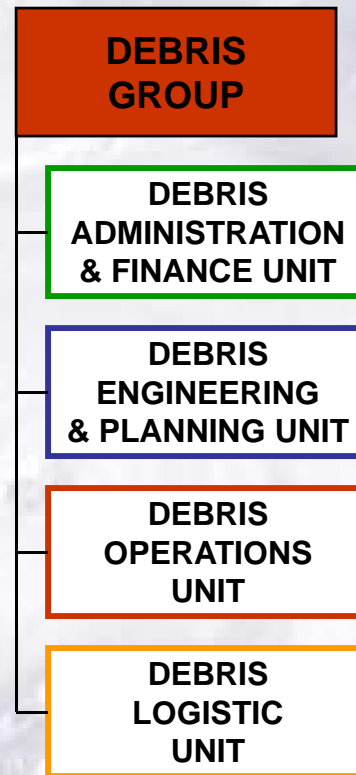
## Where Does the Debris Function Fit?



# ICS and Debris Functions Aligned

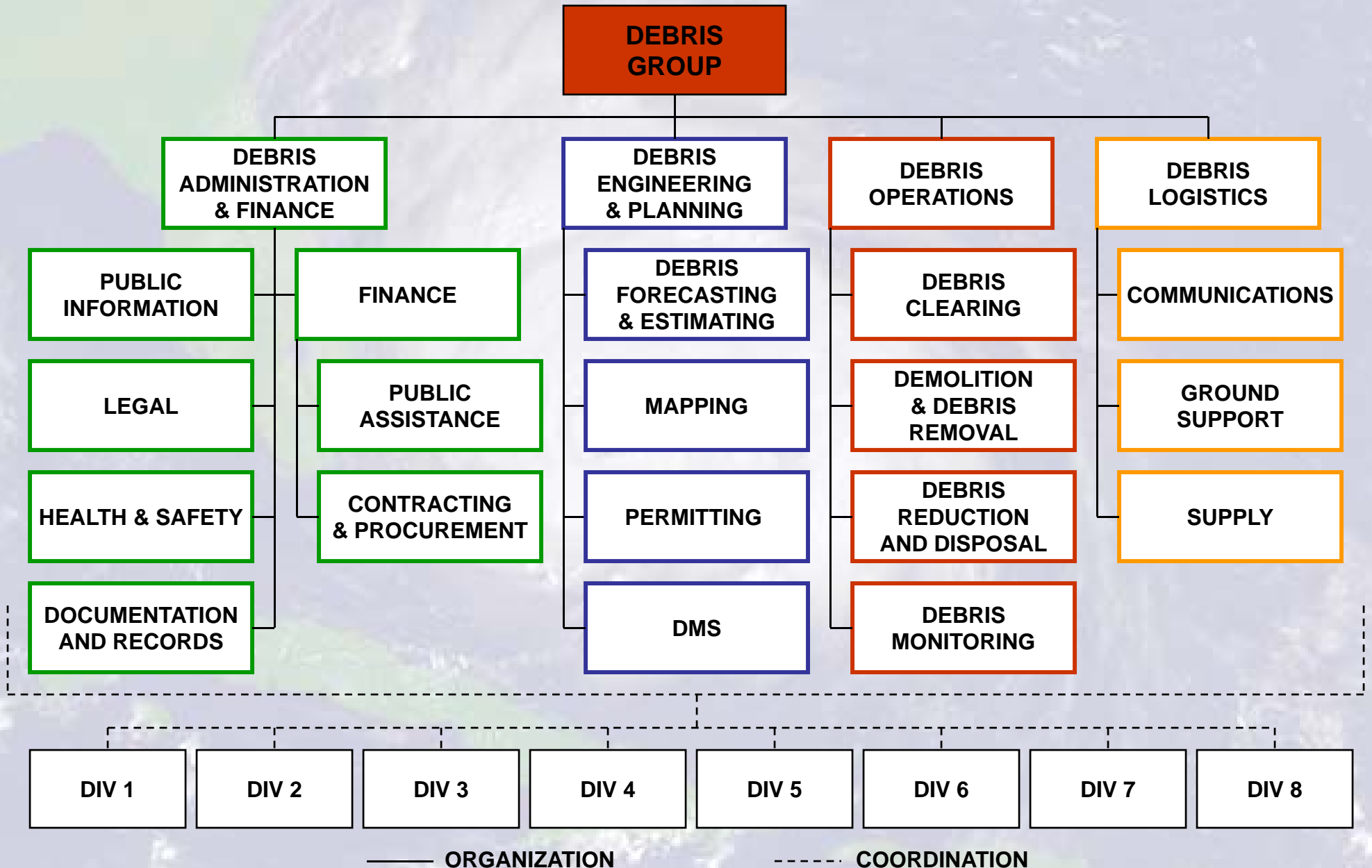


# Debris Group Organization



# EOC Debris Group Organization

(Expanded, Proposed, March 2011)



# Key Components and Coordinating Responsibilities

(Proposed)

- ❖ Debris Management Structure
- ❖ Assessment of the Situation and Assumptions
  - ❖ Debris Collection Plan
  - ❖ Contracted Services
- ❖ Demolition and Debris Removal from  
*PRIVATE PROPERTY*
- ❖ Information Dissemination
  - ❖ Safety Program

## ❖ Debris Management Structure

COUNTY EOP  
(CEMA)

## ❖ Assessment of the Situation and Assumptions

DEBRIS  
FORECASTING  
& ESTIMATING

MAPPING

## ❖ Debris Collection Plan

DEBRIS  
GROUP LEADER

DEBRIS  
ENGINEERING  
& PLANNING

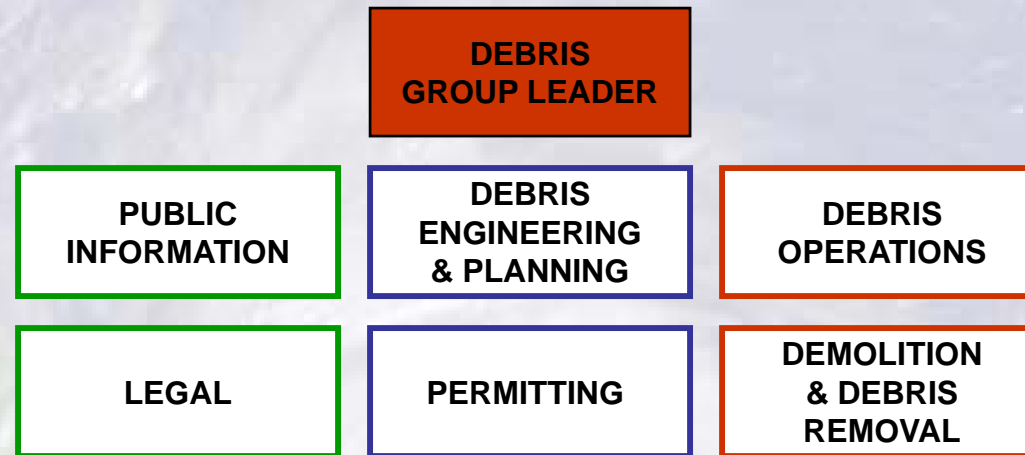
DEBRIS  
OPERATIONS

## ❖ Contracted Services

CONTRACTING  
& PROCUREMENT



## ❖ Demolition and Debris Removal from *PRIVATE PROPERTY*



## ❖ Information Dissemination

**PUBLIC  
INFORMATION**

## ❖ Safety Program

**HEALTH & SAFETY**

## **Recommendation 2.**

**Maintain the DMW as the primary County-wide pre-event debris planning and coordination group.**

## **Recommendation 3.**

**Establish and coordinate a County-wide Debris Management Strategy.**

# COUNTY- WIDE DEBRIS MANAGEMENT STRATEGY

10-19-10

- 1. Emergency planners are proactive developing and coordinating comprehensive debris management plans as part of their overall emergency management planning efforts.**
- 2. Management and coordination roles are identify and responsibilities assigned for the various debris functions.**
- 3. Debris management plans and operations address/comply with State/Local health and safety standards/requirements.**
- 4. Debris management protocols include assumptions for various events, including debris volume(s) forecasting and modeling (as appropriate).**
- 5. Procedures for collecting and disposing of Vegetative debris are established and coordinated.**
- 6. Procedures for collecting and disposing of Construction and Demolition (C&D) debris are establish and coordinated.**

**Chatham County, County-wide Debris Management Strategy (continued):**

- 7. Procedures for collecting and disposing of Personal Property and Household items debris are establish and coordinated.**
- 8. Procedures for collecting and disposing of Hazardous Household Waste (HHW) are establish and coordinated.**
- 9. Procedures for collecting and disposing of Hazardous Waste (HAZMAT) are establish and coordinated.**
- 10. Procedures for collecting and disposing of White Goods are establish and coordinated.**
- 11. Procedures for collecting and disposing of Soil, Mud, and Sand are establish and coordinated.**
- 12. Procedures for collecting and disposing of Vehicles and Vessels are established and coordinated.**

## **Chatham County, County-wide Debris Management Strategy (continued):**

- 13. Procedures for collecting and disposing of Putrescent are establish and coordinated.**
- 14. Local procedures are established for acquiring required regulatory permits.**
- 15. Potential Debris Management Sites (DMS) locations are identified/designated.**
- 16. Procedures for operating, managing, and staffing, DMS locations are established and coordinated.**
- 17. Procedures to monitor DMS locations are established and coordinated.**
- 18. Debris reduction/recycling plans are established and coordinated.**

## **Chatham County, County-wide Debris Management Strategy (continued):**

- 19. Debris management plans and operations comply with environmental protection requirement.**
- 20. Contracting/procurement procedures supporting debris management operations are established and coordinated.**
- 21. Contractors performing work on State and/or Federally maintained roadways are in compliance with Form FHWA -1273 (Rev. 3-94).**
- 22. Procedures to remove debris from private property are established.**
- 23. Road clearing priorities are established and coordinated for the initial 70-Hour Debris Push (“cut and toss” activities).**
- 24. Rosters/lists and supporting documentation are maintained of pre-qualified debris contractors.**

# What's Next

## Recommendation 4.

**All County jurisdictions establish their debris management plans to include identifying and coordinating support requirements.**



# What's Next

(continued)

## Recommendation 5.

**Jurisdictions identify/designate (pre-event) potential debris Management Site (DMS) locations throughout Chatham County.**



# Next for the Workgroup

## Develop a County-Wide Debris Management Plan

- ❖ Incorporate into EOP (*Jurisdictions Participate or Opt Out*)
- ❖ Inter Agency (Jurisdictional) Agreements as Needed
- ❖ Identify Debris Group Staff
- ❖ Pre-Event Contracting:
  - Removal
  - Monitoring
  - DMS Management
  - White/E-Goods
  - Solicit Recycling Contractors (No Cost Haul Off)
  - Identify/Survey DMS Locations
  - Others(?)

A large, semi-transparent background image of a hurricane, showing the characteristic eye and spiral cloud bands over a satellite-style map of the Americas.

**OPEN DISCUSSION**

**IDEAS**

**RECOMMENDATIONS**



**You are welcome and we encourage you to attend  
the next ESF-3/12 Meeting on  
June 29<sup>th</sup>**

**The topic will be DEBRIS PLANNING.**

**Start Time: 9 AM**

**Location: County Annex EOC (295 Police Memorial Dr)**

***To be followed by a Damage Assessment Planning Meeting***



# *Thank You For Participating*

## **Chatham County Debris Management Workgroup**

**CEMA Workgroup Coordinator:  
Don Sullens**

**[dwsullens@chathamcounty.org](mailto:dwsullens@chathamcounty.org)**

**O: 912 201 4500**

**C: 912 658 6106**

