



2011 CHATHAM COUNTY HURRICANE CONFERENCE

HAZARDOUS MATERIALS
CONSIDERATIONS IN A DISASTER EVENT

Hazardous Materials

Response to hazardous materials that are spread throughout a community by storm surge waters and flooding rains that often accompany a hurricane can be challenging.

- Preplanning
- Damages to facilities are inevitable
- Releases are inevitable - Contamination/Hot-zones
- Limited resources
- Responsibilities
- What can we do to prepare and limit the affects?

Preplanning

- ⦿ What will your role be?
- ⦿ How can I or we better prepare?
- ⦿ Do we have a plan?

Damage to Facilities



Damage to Facilities



Damage to Facilities



Damage to Facilities



Damaged to Facilities



Damage to Facilities



Releases

- Hurricane Opal – 1995
- Hurricane Fran – 1996
- Tropical Storm Francine – 1998
- Hurricane Irene – 1999
- Hurricanes Michelle, Charley, Frances, Ivan, Jeanne, Katrina, Rita, Wilma, Ernesto.....

Household, industrial, private business,
government.....

Release – Hot-zone



Release – Hot-zone



Release – Hot-zone



Release – Hot-zone



Release – Hot-zone



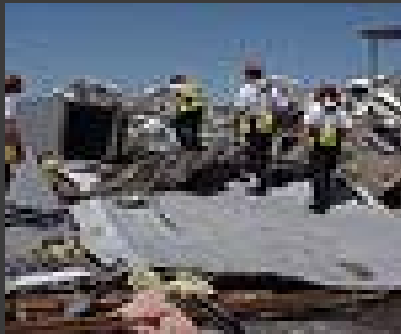
Release – Hot-zone



Release – Clean-up



Limited Resources



Fire/EMS/Search & Rescue

Contamination - Hot-zones



Responsibilities

- ⦿ Tier Response - Local, State, Federal
- ⦿ USCG – planning, response operations
- ⦿ Local Governments – preplanning for the inevitable, coordination with all others, setting up contracts, managing their jurisdiction, returning to normal, etc...
- ⦿ Facilities/Private Business – planning, damage assessment, cleanup
- ⦿ Environmental Companies – assessment, cleanup
- ⦿ Fire & EMS Departments – planning, safety, mitigation
- ⦿ Law Enforcement – planning, life safety, security/order
- ⦿ The Individual - planning, assessment, cleanup....

Summary

- ⦿ Get assistance in setting up your plan (EMA, other agencies/municipalities, etc...)
- ⦿ Preplan, preplan, preplan.....
- ⦿ Have a written plan developed
- ⦿ Harden your facilities/business/home to limit releases/contamination
- ⦿ Plan to return and conduct damage assessment of facilities/business/home
- ⦿ Recovery/cleanup operations
- ⦿ Return to full operations.

THE END